

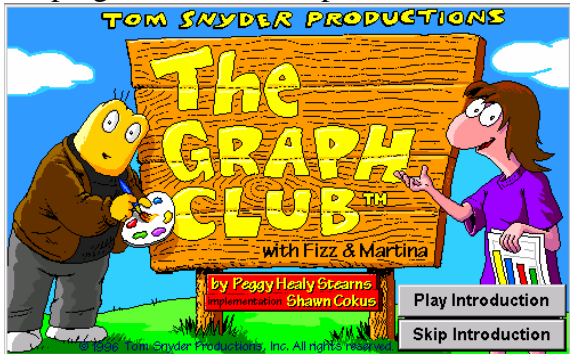
# Graph Club Training:

Double click the Graph Club icon



Graph Club

This is the first screen you will see. You can play the introduction the first time you show the program and then skip the introduction from then on.

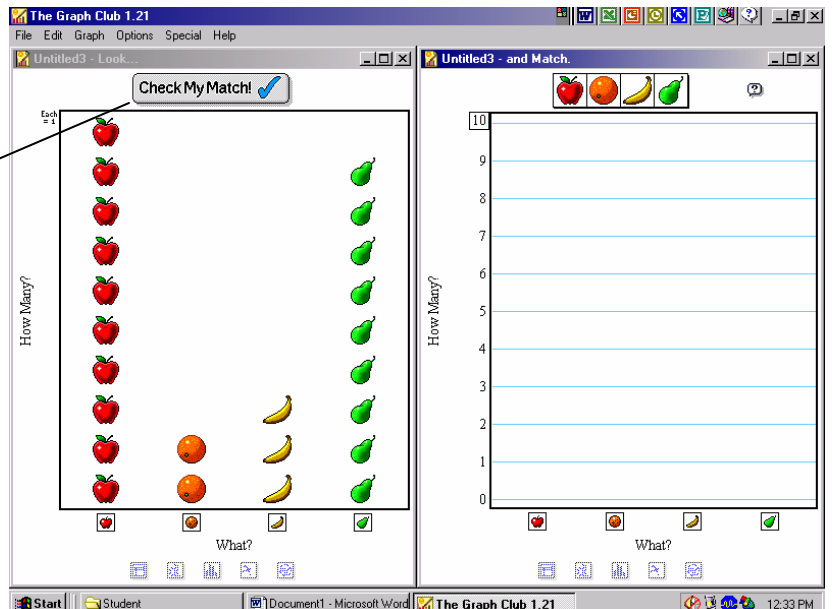


The next screen is your menu that gives you four choices to choose from. Choose an option and click OK.



**Explore** : This is a neat place to show the kids how they can maneuver the graphics, change symbols, scale maximum, etc.

**Match**: The students are provided with a graph and are required to make the blank graph match. After creating their graph, students will click on the check my match button. The computer will check the graph and let them know if they need to make any corrections.



**Create:** This is the place where the students' will add data that they have previously collected to create a graph.

To change the symbols, click on

**Graph**

**Choose Symbols**

To change Scale Maximum, click on

**Graph**

**Scale Maximum**

To change the data, click on the zero, a box will appear and allow you to change the number

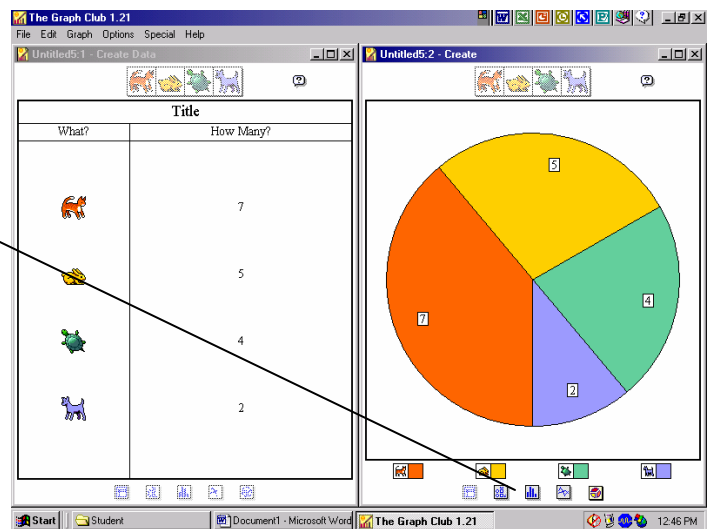
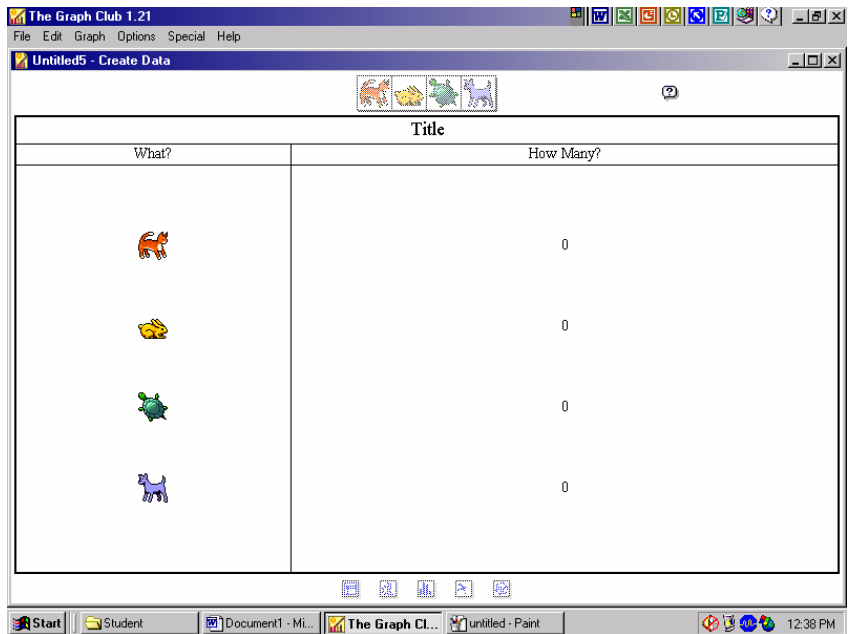
To change the **Title**, **What?** and **How Many?** Just click on the words and a box will pop up allowing you to change the names.

To make the graph, click on

**Graph**

**Make Another Graph**

The students can then click on the icons at the bottom to choose **Pictograph**, **Bar Graph**, **Line Graph** or **Circle Graph**.



To Print Graphs, click on

**File**

**Print Graphs**

This is where you can choose the graphs you want to print. All graphs can be chosen or as many as you want. Simply put a check mark in front of each graph that you want to print. If you want them in color be sure you check the color printer. Make sure the graph has a title and the description is usually a good place to type the student's names. You can also choose how you want to print the graphs, Normal size (1 page) Big Book (4 pages) or Poster (9 pages)

