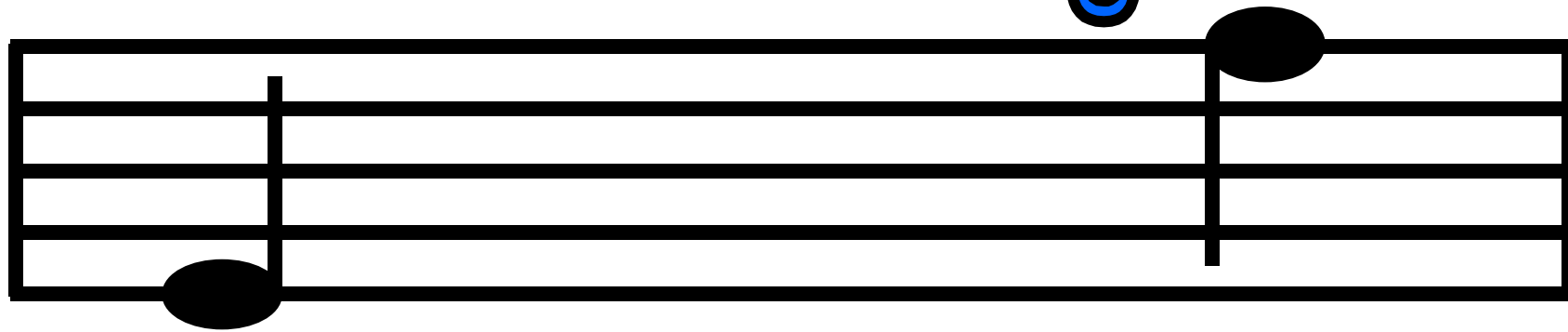


Pitch:

How high or low a sound is

Higher Pitch



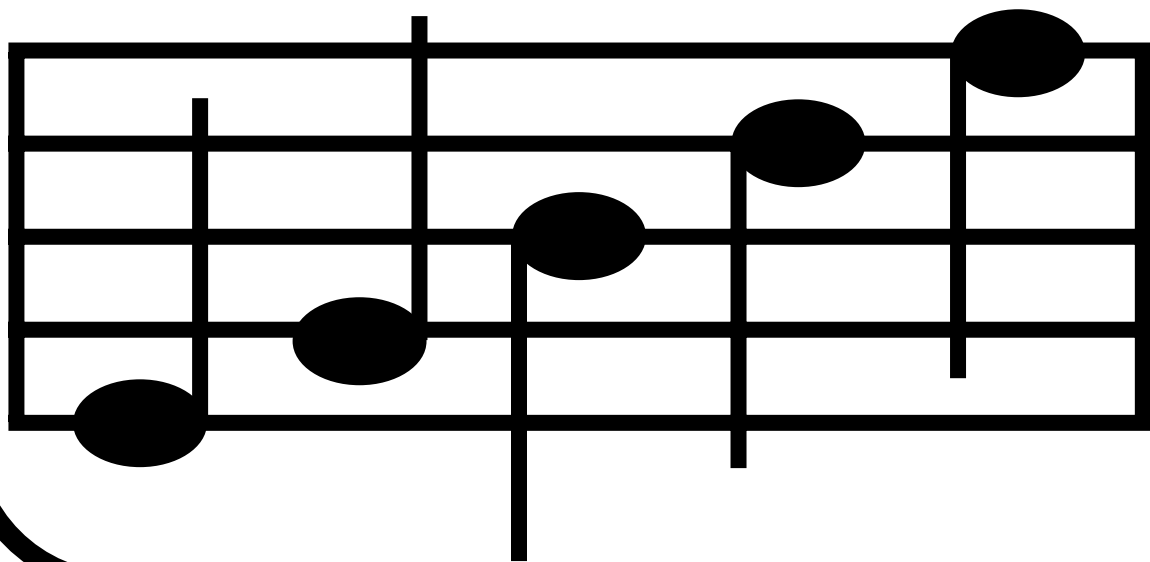
Lower Pitch

Melodic Direction:

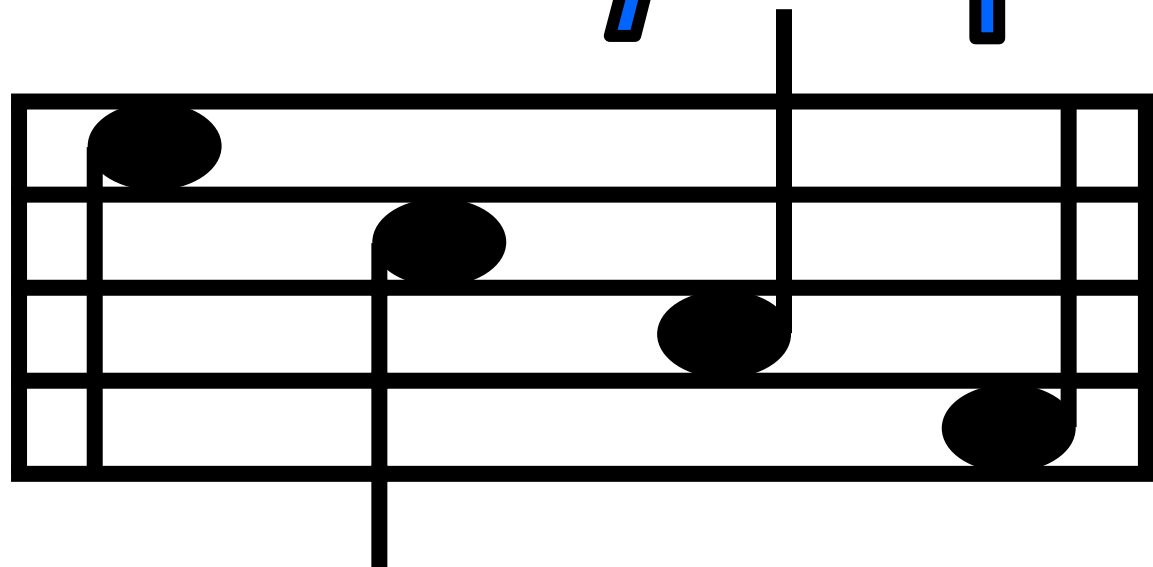
Up, down, or stays the same

*How Melodies Move:
By Skip, Step, or Repeat*

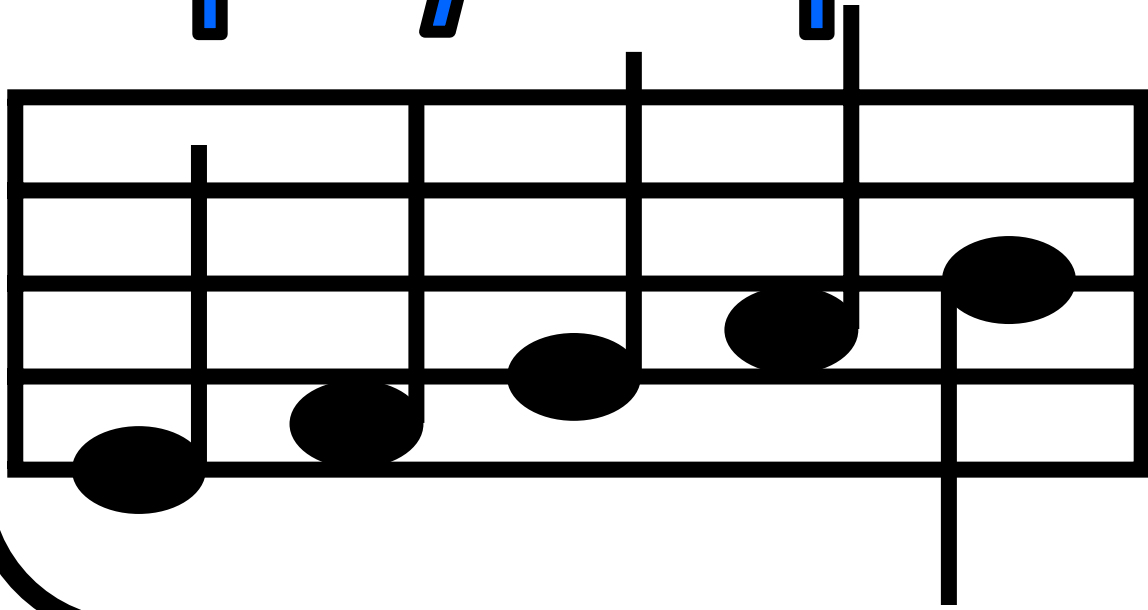
Up by Skip:



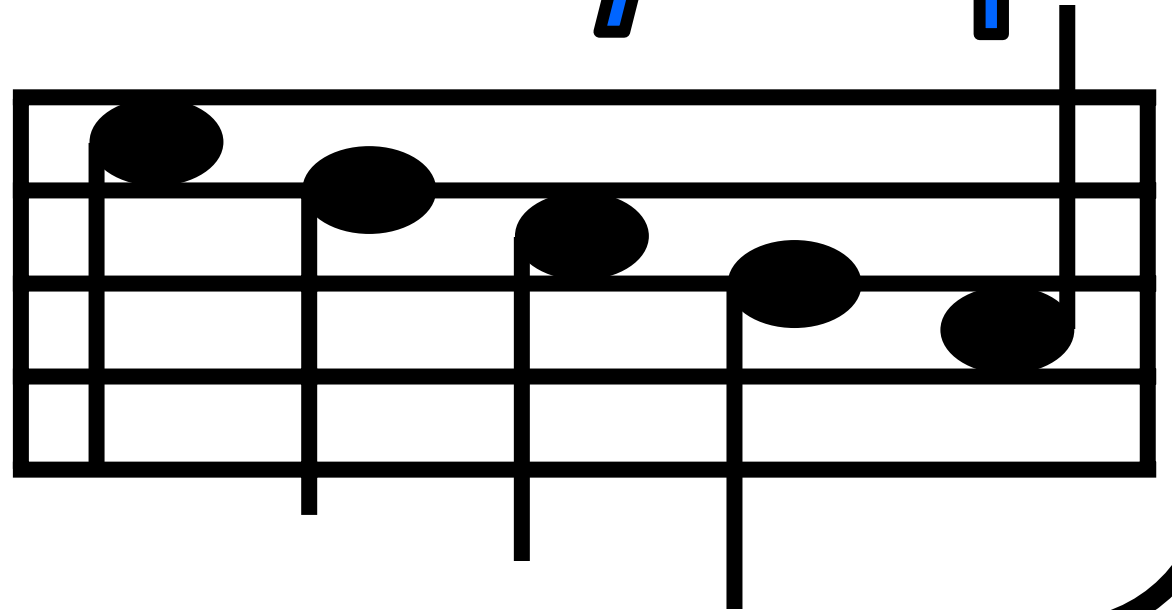
Down by Skip:



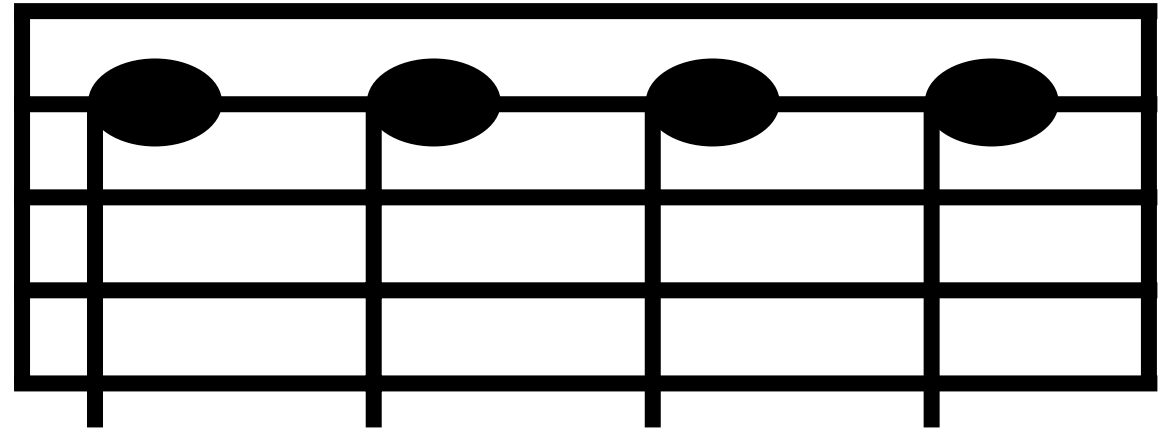
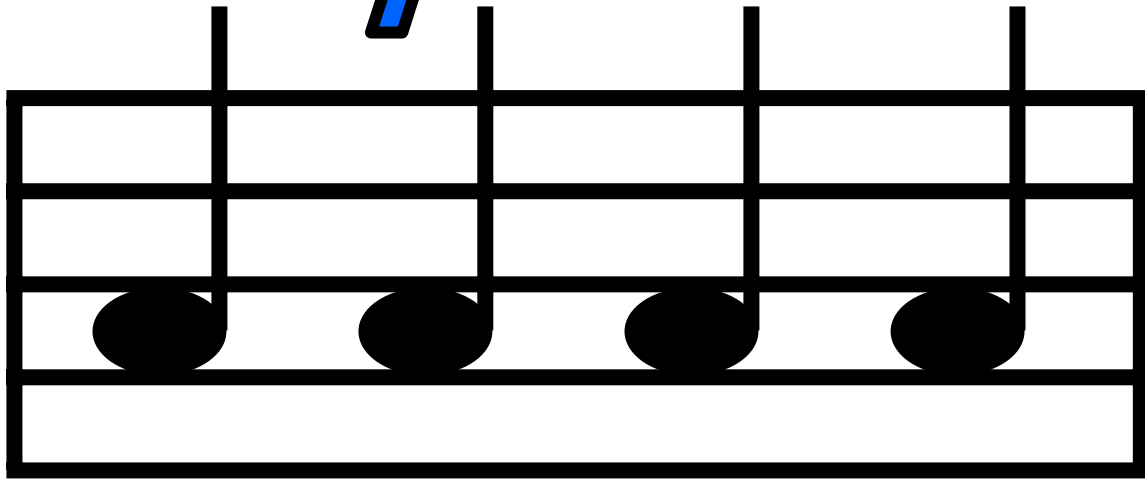
Up by Step:



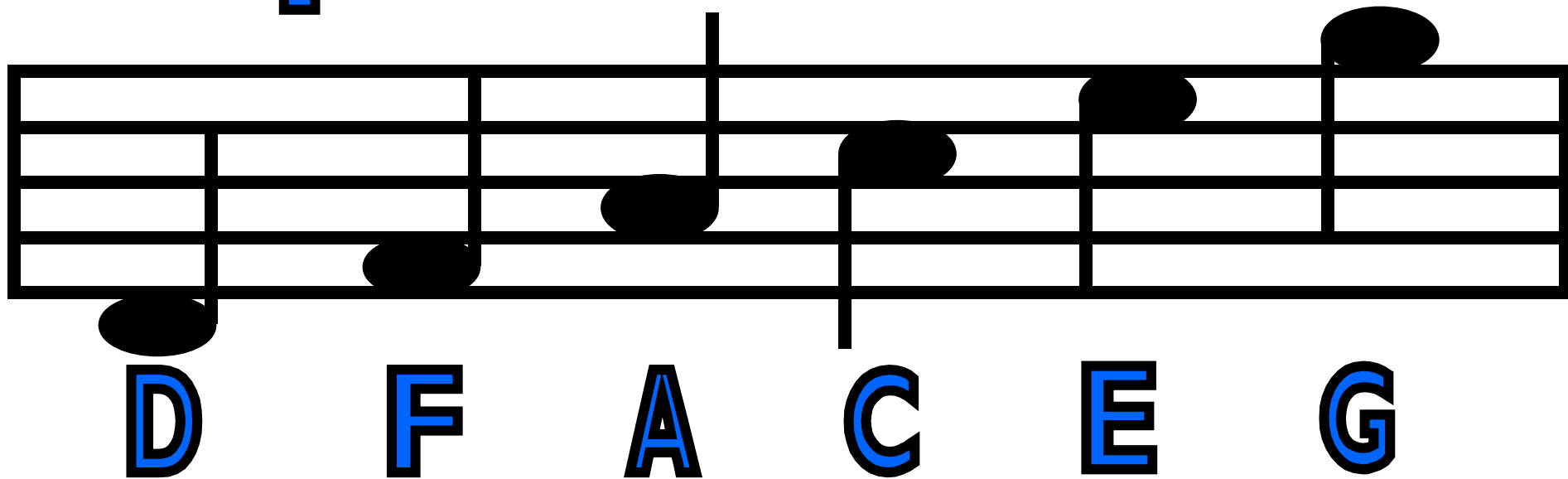
Down by Step:



Stay the Same / Repeat:



Space Notes:



Line Notes:

